

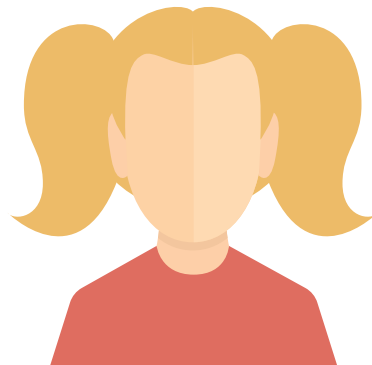
Case Study #3 - Rachel's story

Rachel is 11 years old and lives with her family. She has cerebral palsy and requires the use of a wheelchair. Rachel has significant personal care support needs but attends mainstream school and lives life to the full. She currently receives support from social work in the form of homecare twice a day to assist with getting showered, dressed and ready for school and bed. She also receives a sitting service one evening per week to allow her parents some time away from their caring role.

Due to insurance issues with the care provider the sitter is unable to take any responsibility for Rachel's siblings or friends who may want to visit. Rachel's family is also assessed as being eligible for two weeks respite per year at a local respite unit for young people with physical disabilities.

During the school holidays Rachel is able to access the local play scheme run by the local authority for children with disabilities.

Rachel is a typical 11 year old who loves spending time with friends, going shopping, watching the latest films, going on holiday with her family and fighting with her siblings over the remote. She is a keen swimmer, and is part of the local wheelchair basketball group she is also One Direction's biggest fan.



Case Study #3 - Rachel's story

Rachel is 11 years old and lives with her family. She has cerebral palsy and requires the use of a wheelchair. Rachel has significant personal care support needs but attends mainstream school and lives life to the full. She currently receives support from social work in the form of homecare twice a day to assist with getting showered, dressed and ready for school and bed. She also receives a sitting service one evening per week to allow her parents some time away from their caring role.

Due to insurance issues with the care provider the sitter is unable to take any responsibility for Rachel's siblings or friends who may want to visit. Rachel's family is also assessed as being eligible for two weeks respite per year at a local respite unit for young people with physical disabilities.

During the school holidays Rachel is able to access the local play scheme run by the local authority for children with disabilities.

Rachel is a typical 11 year old who loves spending time with friends, going shopping, watching the latest films, going on holiday with her family and fighting with her siblings over the remote. She is a keen swimmer, and is part of the local wheelchair basketball group she is also One Direction's biggest fan.

