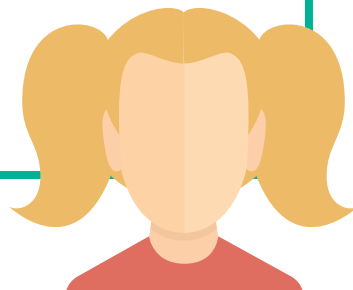


2 Directing the available support

Rachel and her family identify a support provider who are willing to be flexible and recruit two dedicated workers to support Rachel. Rachel and her family are involved in the advertising locally and interview candidates. It is important to Rachel that her supporters are “young and trendy and have similar interests to Rachel”. The support provider is able to recruit two college students who are undertaking a HNC in Social Care, they live locally to Rachel and can be flexible with their support.

The Local Authority gives over the annual agreed budget for Rachel’s support and together they are able to help Rachel and her family develop a support plan that works for her.

The budget can be used creatively as long as Rachel’s outcomes are being met. Rachel’s social worker meets with Rachel regularly to check how things are going and to review and monitor the support plan. This is achieved using a person centred approach with Rachel. Rachel is supported to engage in the process by developing a visual pathway by mapping out what matters most to her so her personal outcomes can be explored and agreed.



2 Directing the available support

Rachel and her family identify a support provider who are willing to be flexible and recruit two dedicated workers to support Rachel. Rachel and her family are involved in the advertising locally and interview candidates. It is important to Rachel that her supporters are “young and trendy and have similar interests to Rachel”. The support provider is able to recruit two college students who are undertaking a HNC in Social Care, they live locally to Rachel and can be flexible with their support.

The Local Authority gives over the annual agreed budget for Rachel’s support and together they are able to help Rachel and her family develop a support plan that works for her.

The budget can be used creatively as long as Rachel’s outcomes are being met. Rachel’s social worker meets with Rachel regularly to check how things are going and to review and monitor the support plan. This is achieved using a person centred approach with Rachel. Rachel is supported to engage in the process by developing a visual pathway by mapping out what matters most to her so her personal outcomes can be explored and agreed.

