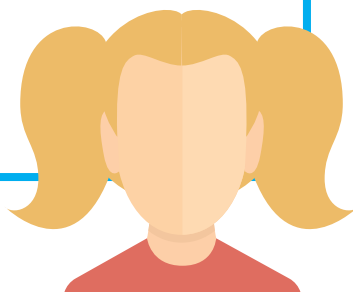


#### 4 Mix & Match

Rachel uses a mixture of all the options. Her parents take a Direct Payment to pay for Angela to become Rachel's PA and support with daily personal care and use the payroll agency. Rachel still uses the respite unit but only for one weekend per year when her friend is also going and has two weekend breaks with Angela and her friend to allow them to spend time together. The three girls pool their respite budgets to fund this. Rachel with the support of her social worker sources a care provider that can provide a sitter service that is happy to support a community outing for Rachel and her friends to go bowling. They work with Rachel, her family and friends to develop safety strategies that allow Rachel to be less reliant on the support worker when she is accessing the bowling. The aim is that in the future Rachel will develop skills to enable her to access her community with minimal support from workers. Rachel still accesses the council run play scheme because she loves it and has lots of friends there with similar experiences and interests.



#### 4 Mix & Match

Rachel uses a mixture of all the options. Her parents take a Direct Payment to pay for Angela to become Rachel's PA and support with daily personal care and use the payroll agency. Rachel still uses the respite unit but only for one weekend per year when her friend is also going and has two weekend breaks with Angela and her friend to allow them to spend time together. The three girls pool their respite budgets to fund this. Rachel with the support of her social worker sources a care provider that can provide a sitter service that is happy to support a community outing for Rachel and her friends to go bowling. They work with Rachel, her family and friends to develop safety strategies that allow Rachel to be less reliant on the support worker when she is accessing the bowling. The aim is that in the future Rachel will develop skills to enable her to access her community with minimal support from workers. Rachel still accesses the council run play scheme because she loves it and has lots of friends there with similar experiences and interests.

