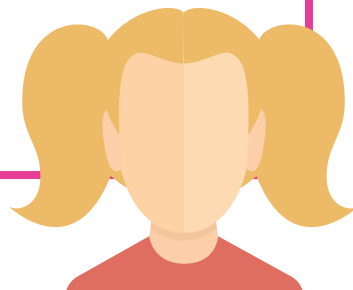


### 3 The local authority arranges the support for the supported person

Rachel and her family chose to continue to use the services provided by the local authority.

Rachel's social worker work in a co-productive manner and encourages the homecare service to provide Rachel with consistent workers who are young and full of energy. After discussions with the sitter service there is an agreement that the sitter is able to take Rachel out with her friend (Rachel's friends parents are part of this discussion and negotiations are reached which everyone is comfortable with).

Rachel continues to use the respite resource in her local area but works with the team there to ensure that her breaks coincide with a friend from the play scheme to allow them to spend quality time together. Rachel and her friend are consulted prior to their respite to allow them to be involved in the planning of activities and outings.



### 3 The local authority arranges the support for the supported person

Rachel and her family chose to continue to use the services provided by the local authority.

Rachel's social worker work in a co-productive manner and encourages the homecare service to provide Rachel with consistent workers who are young and full of energy. After discussions with the sitter service there is an agreement that the sitter is able to take Rachel out with her friend (Rachel's friends parents are part of this discussion and negotiations are reached which everyone is comfortable with).

Rachel continues to use the respite resource in her local area but works with the team there to ensure that her breaks coincide with a friend from the play scheme to allow them to spend quality time together. Rachel and her friend are consulted prior to their respite to allow them to be involved in the planning of activities and outings.

