

AGE OF CRIMINAL RESPONSIBILITY (ACRA, 2019) INITIAL RESPONSE & INVESTIGATIVE PROCESS (KEY STEPS)

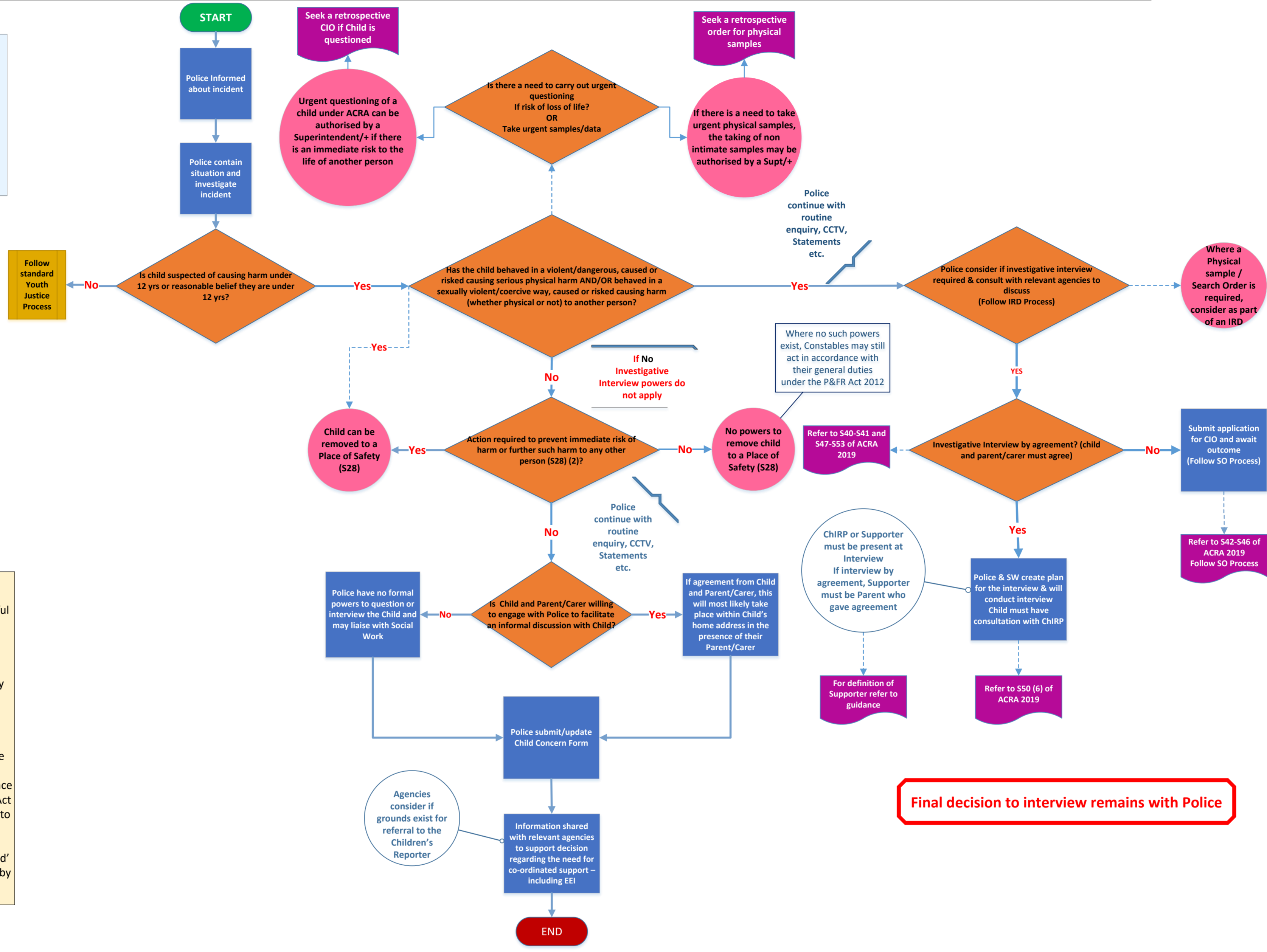
If at any point during the process there is information to indicate a risk of significant harm to the child, Child Protection (CP) processes must be followed and must take priority
 Follow National CP Guidance and Local Procedures
Exceptions would be risk of loss of life to another person when urgent powers can be used
 Note that the wellbeing needs of the child will always be prioritised and a multi agency approach will be adopted at the earliest practicable stage of the investigation

Colour Key:
 Green - Child Protection, Wellbeing
 Orange - Legislative Requirements (part of Decision making Process)
 Yellow - Alternative Process
 Pink - Sub Process
 Blue - Police/Social Work Actions
 Purple - Processes (usually documents) to be referenced

Acronyms:
 CHIRP - Child Interview Rights Practitioner
 CIO - Child Interview Order (Sheriff's)
 CPCC - Child Protection Case Conference
 CSO - Compulsory Supervision Order
 EEI - Early and Effective Intervention
 IRD - Interagency Referral Discussion
 P&FR Act 2012 - Police and Fire Reform Act 2012
 SO - Sheriff's Order
 SW - Social Work

For Consideration:

- Management of children who cause harmful behaviour
- Consider whether child protection applies
- Consider CPCC additional protective measures
- Is referral to Reporter necessary at an early stage (prior to completion of the police investigation)?
- Is an IRD still appropriate for a child where harmful behaviour is below the threshold, however presents significant concerns (due to nature of occurrence of behaviour)?
- Constables will continue to act in accordance with their general duties under the P&FR Act 2012. This may involve removing the child to an alternative POS, such as their home address.
- ACRA 2019 definition of 'Parent of the Child' places limitations on the use of 'Interview by Agreement'



Note: This flowchart references step by step processes that will not always flow seamlessly as they will be influenced by external factors in an operational setting, such as delays caused by CIO appeals and the logistical challenges surrounding the investigative interview.

Child Protection (CP) / Wellbeing

Child Protection (CP) / Wellbeing